

MEDICAL



ILLNESSES AND ACCIDENTS

If your child has a serious or recurring illness please inform us and tell us what action needs to take place.

Please tell us if your child has any allergies or special dietary requirements.

When your child is in Reception you will receive a medical questionnaire from the School Nurse. She will check your child's vision, hearing and growth.

Some children and parents will be asked to attend a school medical. The School Doctor will not examine your child without your permission. All medicals are strictly confidential.

We will contact parents of any child displaying clear symptoms of Covid. A child will have to be taken home and asked to self-isolate until they are no longer ill or confirmed negative. Family or other contacts do not need to isolate.

When the cause of illness is unknown, any child with a rash, ~~diarrhoea~~, ~~vomiting~~ or who is generally unwell should remain at home until medical advice has been obtained, or until the child has recovered.

If your child has vomiting or diarrhoea please follow Wrexham guidelines by keeping your child at home for 48hrs after the last bout.

In cases of confirmed Chickenpox, Fifth Disease (Slapped Cheek Syndrome), and Rubella it is important that the Head Teacher is made aware so that women of child-bearing age can be informed.

MEDICAL CONTINUED

If your child needs medication during the day or requires intermediate medication such as inhalers, we are able to give these in school. Parents / Carers must provide the medication in its original packaging with the child's name clearly labelled and complete a medication slip at the office. Medication given will be recorded in a medication book, and kept in the office or fridge as required.

If your child is sick and unable to attend school, no extra work will be given during the first week of absence, but the class teacher will be pleased to organise work for them during the second week or longer. If your child is accidentally injured, or becomes ill in school we will make every effort to contact you. Please ensure all contact numbers are up to date.

Most members of staff have first aid qualifications. Cuts and grazes are treated in school. If a more serious accident occurs, the responsible adult in charge will take whatever action necessary. Every attempt to contact parents will be made.

Parents are informed of any "head bumps" either verbally in person, in writing or by telephone. Depending upon the severity of the bump, you may be asked to come and collect your child from school.

In the event of any serious accident, if we are unable to contact a parent and feel that the child needs further attention we will call for an ambulance.



HEALTH AND SAFETY



Smoking or vaping is not allowed on the school grounds or in the building.

In the interest of security, all visitors are required to report to Reception, sign the Visitor's Book and wear a visitor's badge before gaining access into the school.

Children who ride their bikes or scooters to school may store them in the bike racks. Children must dismount from their bikes or scooters when they enter the school grounds and walk them to the bike racks. The school does not accept any responsibility for the bikes stored in the bike racks.

The Health, Safety and Welfare regulations provided by the LA are followed together with national guidance and legal requirements. The school has an appointed Health and Safety Co-ordinator, and also a Health and Safety Governor. Together with the head teacher they carry out an annual Health & Safety audit and risk assessment of the premises. The head teacher presents a report to the full Board of Governors.

The school keeps an accurate record of all accidents on school premises.

The premises are fully alarmed to protect furniture, equipment and resources out of school hours. The school's external grounds are monitored and recorded by a 24 hour CCTV system. Pedestrian and vehicle access gates are kept locked out of school hours.

COMMUNITY INVOLVEMENT

Members of the local community regularly visit the school to talk to the children, e.g. local police force, fire brigade, and nurse. Children also visit Chirk Court residential home and Chirk Hospital to entertain the residents with Christmas carols and songs.

Children often visit places of interest within the community, and are taught to respect their environment. They are encouraged to raise funds for local, national and international charities, throughout the year.



Rainbows Nursery Plus
About Us...



Rainbows Nursery

Rainbows Nursery Plus is open to Nursery Pupils between the age of 3-4. We are based in the new early year's unit at Ysgol Y Waun. We are open Monday- Friday 11.30-3 (term time only). An afterschool club is available until 5.30 on request. Children can also access the breakfast club run by the school which opens at 8am.

Perfect wrap around care for the working parent/carer!

Rainbows Nursery is a fee paying childcare service at £15 per session. Working parents/carers may be entitled to the funded 30 free childcare offer from welsh government. Please ask, or visit www.gov.uk/30-hours-free-childcare for further information.

Rainbows Nursery have highly qualified staff who are passionate about providing high quality care. They offer a safe, stimulating and fun environment in which your child can play, discover and develop.

If you would like any further information or would like to book a visit, please contact lead supervisors Rachel Heyward or Kay Popyk on 01691 770530 or 07852928057.



SCHOOL CLUBS

School clubs take place after school between 3-4pm Chapel Lane Site or 3:15- 4p.m. Lloyd's Lane Site. The range of clubs put on is dependent on the children's interests and have included:- Football, Forest Schools, Tae Kwon Do, Tennis, Dance, Art, Lego, Choir. These change regularly.



BREAKFAST CLUB

Breakfast club is available for parents from 8am on both sites to all pupils whose parents wish them to attend. There is now a charge of £2 for this. If your child accesses breakfast from 8.20am it is free. The breakfast on offer will be healthy and nutritionally balanced, based on 4 food groups. A typical breakfast could be: cereal with milk and chopped fruit, a piece of toast and a drink, or toast, fruit juice and yoghurt.

AFTER SCHOOL CLUB

Rainbows after school club is based on the Chapel Lane site and is open to all pupils aged 3-11. Children from both sites may attend the club, supervisors will organise collection of pupils from the Lloyds Lane site.

The club runs Monday to Friday from 3 o'clock to half past 5, term time only. Further details may be obtained from the school office.

SAFEGUARDING

At Ysgol Y Waun, we provide a safe, caring, positive and stimulating environment that promotes the learning and care of all, alongside the social, physical, emotional and moral development of the individual child. Safeguarding is the responsibility of all and therefore all staff know the policies and procedures related to safeguarding. Our prime concern is always the well-being of our pupils and if we act it is to protect the individual.

Every school is required to have a Designated Lead for Safeguarding. At Ysgol Y Waun it is Mrs Rodgers, Acting Headteacher, and Mrs Morgan, Acting Deputy Headteacher, (joint leads).

We wish to work with parents and carers to ensure the best possible care for children, but this may occasionally require situations where we have a cause for concern to be referred to Social Care. In these cases parents/carers will always be informed unless it has been considered that the child may be put at further risk.

All policies related to safeguarding, including Online Safety, are available from the School Office, or by emailing the address on the school website.



Trefniadau Diogelu Cymru
Safeguarding Procedures Wales

PROVISION

The majority of children are supported within the school by class teachers and learning support assistants. We use the expertise of staff to help identify specific strategies and interventions for pupils with certain difficulties. Where support is provided, each child is provided with a set of learning objectives that aim to meet a particular need. That programme is then delivered by the class teacher and teaching assistants. This can be done individually, in groups, or as differentiation within the class. The school has two Nurture groups: Saplings on our Chapel lane site and The Orchard on our Lloyds Lane site. These can be accessed in an afternoon by children who are identified as needing targeted support under our universal provision offer.



EQUAL OPPORTUNITIES

Staff and Governors at Ysgol y Waun aim to create an environment within the school, which provides all children and staff with equal opportunities in all areas of their education and development. We believe it is important to treat children as individuals irrespective of gender, race, disability or religious backgrounds. We aim to provide equal opportunities for children in all aspects of school life both in formal curriculum and in the hidden curriculum. Copies of the school's Equal Opportunities policies (including Racial Discrimination and Disability) are available on request from the head teacher.

RECOGNITION

It is important that children who require support are identified as soon as possible.

Through regular assessments children's progress can be evaluated and provision reviewed.

Universal Provision Registers are maintained to monitor pupils whose needs can be met within the classroom through the implementation of strategies and/or specific programmes.

A pupil may require support in one or more of the following areas:

Cognition and Learning,

Development of Communication and Social Communication,

Physical, Sensory, ~~and~~ Medical, Social, Emotional and Behavioural Needs.

Where a child is seen as having a learning difficulty 'significantly greater' than the majority of others of the same age, then an IDP is drawn up and the child is monitored on the Additional Learning Needs Register

OUTSIDE AGENCIES

We work closely with a variety of agencies to ensure that all needs are met within our school:

Educational Psychology Service Child

ANew (behaviour support team)

CAMH Schools in Reach

Pre-School development Team

Narrative project

Strong Minds

Inclusion Service

Speech Therapists

Medical Specialists

Education Welfare Officer

SPECIAL EDUCATION NEEDS

ESTYN INSPECTION REPORT 10.2.23

'PROVISION FOR PUPILS WITH ADDITIONAL LEARNING NEEDS (ALN) AND COMPLEX SOCIAL AND EMOTIONAL NEEDS IS A STRENGTH OF THE SCHOOL.'

AIMS

To create an environment that meets the additional learning needs of each child.

To develop a climate of support in which confidence and self-esteem can flourish without fear of criticism.

To actively involve children and parents in the education of children with additional learning needs.

To assess children with additional learning needs and to provide for those needs so that the children achieve according to their abilities.

To use the expertise of the ALNCO (Additional Learning Needs Co-ordinator) and external agency specialists.

To ensure that all children have access to a broad and balanced curriculum.

To implement the new ALN and Educational Tribunal (Wales) Act.

To keep abreast of new initiatives and developments in the area of additional needs education and to develop school practices as appropriate.

To ensure equality of opportunity. Additional needs may include the following: -

- Emotional, social and behavioural difficulties and/or mental health needs.
- Moderate learning difficulties, characterised by low attainment.
- Specific learning difficulties.
- Sensory impairment.
- Physical disabilities.
- Autistic Spectrum Conditions
- High attainment by Able and Talented children

OUR VALUES AND BEHAVIOURS

We have listened to our staff, our pupils, our parents, our governors and members of the community, and the following values and behaviours were mentioned frequently when we discussed our 'New School Vision'.

Our Values	Our Behaviours
Be Honest	Everyone at our school is unique – our learners, their families, staff, <u>governors</u> and the wider community. We will be honest and open in our work and respect the views and feelings of everyone.
Be Kind	Our school community promotes a caring and nurturing environment, <u>as we treat each other with respect.</u>
Be Happy	We support every individual learner's well-being to ensure they enjoy their learning every day.
Be Creative	Our learners are encouraged and empowered to be creative, innovative and entrepreneurial.
Be Curious	Learners are supported to influence their own learning as we facilitate and encourage a thought provoking and challenging learning environment.
Be Healthy	We will be active and fully involved in the life of our community and we will encourage our learners to build their mental and emotional well-being by developing confidence, <u>resilience</u> and empathy.
Be Confident	We hope that by instilling <u>all of the above values</u> in our pupils, we will help them to grow into confident individuals who question and challenge what they learn by asking questions and exploring answers.

All members of the school community are expected to behave towards each other with respect and consideration, politeness and good manners. Children are encouraged to take responsibility for their own actions. The children are constantly reminded of our expectations in all areas of school life - in the classroom, around the school, in the playground and in assembly.

Our emphasis is placed firmly on encouragement and praise for effort, achievement and good behaviour, with a reward system shared by the whole school. Good behaviour is a strength of Ysgol Y Waun:

ESTYN INSPECTION REPORT 10.2.23

'THEY BEHAVE WELL ACROSS THE SCHOOL AND DEMONSTRATE RESPECT FOR THE CONTRIBUTIONS OF OTHERS...'

Bullying is not tolerated at Ysgol Y Waun. There are very few incidents of bullying here and if they do occur are dealt with immediately and are taken very seriously. All children are clear about procedures for reporting bullying and can do so in confidence. The Anti-Bullying policy can be found on our website.

PEDESTRIAN ACCESS

If you are walking to school, you are requested not to bring your child through any of the car park areas.

CHAPEL LANE

DROP OFF

Nursery and Reception parents bring the children through the 'Rainbow gate' and to the child's classroom. Then continue around the back of the building and exit through the staff car park.

Year 1 and 2 parents please drop children off at the 'Rainbow gate'. They will be met by a member of staff on the path by the small gates.



PICK UP

All children must be picked up outside their classroom.

LLOYDS LANE

DROP OFF

All children MUST come down the main pedestrian path off Lloyds Lane.

Children MUST NOT walk through the double gates and up the road.



PICK UP

Year 3 and 4 parents may collect their child from the main pedestrian entrance. Class teachers will walk their class to the pedestrian gate.



Year 5 and 6 children leave by the bottom doors nearest the leisure centre.

If you are meeting your child from school please could you remain either by the Leisure Centre entrance or by the small pedestrian gate.

Please do not wait on the Staff Car Park.



CAR PARKING AND SITE ACCESS FOR VEHICLES

- There are two designated car parks which are for the use of staff, visitors to the school and local authority contracted taxis.
- Car park spaces with easy access to the school buildings have been designated for disabled drivers.
- Parents are not allowed to bring cars onto the site, except in the case of exceptional circumstances where the permission of the local authority will be sought on your behalf.
- Children are not allowed access to the car park unless under adult supervision.

All cars are parked at the owners' risk.

The school does not accept responsibility for damage or loss.



VEHICLE PARKING TO DROP OFF AND PICK UP.

Chapel Lane site

Please park on the road outside the school – DO NOT use staff car park.

Please DO NOT park in the LIBRARY car park

It is illegal to stop on the yellow zig-zag lines at anytime.

We ask for your co-operation in not obstructing driveways belonging to the school neighbours.



Lloyds Lane site

Please park on the road outside the school – DO NOT use staff car park.

Please DO NOT park in the Leisure Centre car park

It is illegal to stop on the yellow zig-zag lines at anytime.

We ask for your co-operation in not obstructing driveways belonging to the school neighbours.

Please be aware that when the children have been on school trips the buses will need access to the laybys thank you.

PARENTS AND CARERS IN PARTNERSHIP

We are firmly committed to building a partnership between home and school with the aim of developing shared expectations, of enhancing the quality of education, and of achieving high standards. We would like the partnership to take a variety of forms including:

- the sharing of books and undertaking other appropriate activities to support your child at home;
- to download seesaw to celebrate the children's learning with you;
- to use seesaw as a communication tool with teachers;
- attending parent/carers evenings;
- attending workshops;
- attending assemblies and concerts



Parent/carers evenings take place twice a year although parents are welcome to see the class teacher at any other mutually convenient time. Reports are also sent out in the summer term to share the progress your child has made throughout the year.

CONTACT NUMBERS

On entering school you are asked to complete an admission form giving details of your child and including telephone contact numbers and emergency contact numbers. It is vital that you inform us immediately of any changes in these details so that our records are accurate.

NEWSLETTERS

Newsletters are sent weekly. We are trying to reduce the amount of paper we use, so we tend to communicate such documentation via our online platform See-Saw. We aim to give you as much information about school events and activities as possible. A diary of events is usually given at the beginning of each term, but reminders will be sent nearer to the event. We also send updates and reminders via our school Facebook account.



PARENT VOLUNTEERS

Any parent or other adult who has time to spare, either regularly or occasionally, are most welcome to help in many varied ways in school life. This could include going with a class on a school trip, coming in to listen to readers or helping in the classroom. If you feel you could help, please see your child's teacher or Head Teacher, and you will be asked to complete a volunteer registration form. Statutory police checks must be undertaken prior to working in the school.

CHARGES FOR EDUCATIONAL VISITS

In accordance with the Educational Reform Act 1988, no charges are made for activities taking place in school hours which involve whole classes and are over and above the usual work to follow the Curriculum for Wales. However, we do occasionally ask parents for voluntary contributions towards activities that would be too expensive to be funded out of the school's budget, such as educational visits. These activities have great educational value, but can only take place if sufficient contributions are received to cover the costs. No child will be excluded because of the inability to pay, however, if not enough contributions are received the school and governors may decide to cancel. The cost of breakages, lost or destroyed school property must be paid for. A full copy of school's Charging and Remissions policy is available at parents' request.



SEX AND RELATIONSHIP EDUCATION

Our Relationships and Sexuality Education (RSE) supports learners to develop the knowledge, skills and values to understand how relationships and sexuality shape their own lives and the lives of others. Through these sessions, learners are equipped and empowered to seek support on issues relating to RSE and to advocate for themselves and others.

The school ensures that RSE is embedded in the school's values, rights and moral framework e.g. by showing respect for all learners, staff and the wider community, by celebrating differences, building healthy relationships and inclusion of sexual diversity.

There are legal requirements for RSE to be developmentally appropriate, including the resources schools use in implementing RSE. Topics like online safety, consent and sexual health are all included in the Code, but at developmentally appropriate phases so learners aren't exposed to things that aren't appropriate to their age and development.

At a younger age, for example, they are taught about treating each other with kindness and empathy. As children grow older, they gain an understanding of topics such as online safety, consent and sexual health – all of which will be handled in a sensitive way. Learning in RSE also includes recognising, understanding and speaking out about all forms of discrimination, violence, abuse and neglect and to seeking support and advice on a range of issues from trusted sources.

Relationships and Sexuality Education

INFORMATION FOR PARENTS/CARERS



Relationships and Sexuality Education (RSE) is mandatory within the Curriculum for Wales 2022.

Our comprehensive whole school programme is based on the requirements of the RSE Code 2021, Welsh Government.

The school acknowledges that parents/carers are essential to the success of our RSE programme. This leaflet outlines some of the broad mandatory content that will be taught within our whole school RSE programme.

Evidence emphasises that children and young people who have received effective early RSE are more likely to keep themselves safe and make informed choices in respect of their health and wellbeing.

Images from Teach-Health 4 Kids resources



In association with



© Teach-Health 4 Kids 2021. All Rights Reserved

In Progression step 1 Nursery and Reception

Children will:

- Understand diversity of families and relationships and why these are important.
- Use accurate terminology for all body parts.
- Be aware of how human bodies change as they grow.
- Understand the importance of personal self-care and hygiene.
- Recognise that everyone's body is unique and special to them.



In Progression step 2 / 3 Year 1, 2, 3

Children will:

- Be aware of the characteristics of different families and friendships and their diversity.
- Understand the importance of sex and gender equality.
- Understand different kinds of harmful or abusive behaviour and the role technology can play.
- Develop skills to build consensual relationships and know how to safely respond and report harmful behaviours and relationships offline and online.
- Understand how to keep safe online.



Year 4, 5, 6

- Understand how children and young people experience changes during puberty.
- Know how to manage personal self-care and hygiene, including the importance of menstrual well-being.
- Understand how reproductive organs develop in the human body.
- Understand fertility and the processes of reproduction.
- Recognise the process of pregnancy and birth.



- Understand everyone's right to privacy, personal boundaries and which parts of the body are private.
- Be able to communicate if someone is touching them in a way that makes them feel uncomfortable.
- Be able to recognise positive and harmful behaviours, including bullying.

FOREST SCHOOL

We are lucky enough to have a forest school area on both sites, enabling our children to access an alternative curriculum in the outdoors. The forest school can improve self-esteem, independence, confidence, social communication, and team skills.



Key skills such as motor skills and manual dexterity are developed. Overall behaviour, motivation and attitude to learning are improved, as well as health and well-being. The children are encouraged to use their senses, creativity and imagination. Forest school nurtures an understanding and caring attitude towards the environment and the natural world.



THE CROSS-CURRICULAR RESPONSIBILITIES OF LITERACY, NUMERACY AND DIGITAL COMPETENCE

The cross-curricular responsibilities of literacy, numeracy and digital competence support are essential for learners to be able to participate successfully and confidently in the modern world. Literacy, numeracy and digital competence are a fundamental part of our school-level curriculum design across all areas of learning and experience. They are embedded within our curriculum where they support the learning set out within each lesson. In each year group, teachers will plan for progression across the full range of literacy, numeracy and digital skills in a flexible manner, appropriate to the needs of individual learners. To ensure that learners develop high levels of competence in these skills and have frequent opportunities to develop, extend and apply them across the curriculum, the National Literacy and Numeracy Framework (LNF) and the Digital Competence Framework (DCF) will continue to be implemented.



SCIENCE AND TECHNOLOGY

Science and Technology draws on the disciplines of biology, chemistry, computer science, design and technology, and physics to enhance our learners' knowledge and understanding of the world. Learning experiences in Science and Technology will help our learners to understand that: - being curious and searching for answers is essential to understanding and predicting phenomena.

- design thinking and engineering offer technical and creative ways to meet society's needs and wants.
- the world around us is full of living things which depend on each other for survival.
- matter, and the way it behaves defines our universe and shapes our lives.
- forces and energy provide a foundation for understanding our universe.
- computation is the foundation for our digital world.



EXPRESSIVE ARTS

In Expressive Arts, our children explore art, dance, drama, film and digital media and music to develop their creative, artistic and performance skills. Learning experiences will help the children to understand that:

- exploring the expressive arts is essential to developing artistic skills and knowledge and it enables them to become curious and creative individuals.
- responding and reflecting, both as artist and audience, is a fundamental part of learning in the expressive arts.
- creating combines skills and knowledge, drawing on the senses, inspiration and imagination.



HUMANITIES

In Humanities, children learn about the world, society and events in the past and present. They will explore the challenges and opportunities that face us, and what ethical action we can take to safeguard the world and its people in the future. Our learners are encouraged to engage with the most important issues facing humanity, including sustainability and social change, and develop the skills necessary to interpret and articulate the past and present. Humanities at our school encompasses disciplines including geography, history, religion, values and ethics; looking at the past, present and future. We focus on promoting an understanding that:

- enquiry, exploration and investigation can inspire curiosity about the world;
- human societies are complex, and are perceived, interpreted and represented in different ways;
- our natural world is diverse and dynamic, influenced by processes and human actions;
- human societies are complex and diverse, and shaped by human actions and beliefs;
- informed, self-aware citizens engage with the challenges and opportunities that face humanity, and are able to take considered and ethical action.



HEALTH AND WELL-BEING

Health and Well-being is about helping your child to look after their physical and mental health including emotional well-being. This area of learning and experience will help our learners to navigate life's opportunities and challenges and will help them to understand that:

- developing physical health and well-being has lifelong benefits.
- how we process and respond to our experiences affects our mental health and emotional well-being.
- our decision-making impacts on the quality of our lives and the lives of others.
- how we engage with social influences shapes who we are and affects our health and well-being.
- healthy relationships are fundamental to our wellbeing.



MATHEMATICS AND NUMERACY

Step one

Teachers look at the Curriculum for Wales Mathematics and Numeracy Descriptors of Learning to ensure that there is breadth and depth of teaching and learning throughout the year.

Step two

Teachers use White Rose Maths to plan appropriate lessons which allow the children's mathematical skills to develop and promotes the five mathematical proficiencies:

- Conceptual understanding
- Communication using symbols
- Fluency
- Logical reasoning
- Strategic competence

These lessons include exciting and engaging activities which enable children to enquire and develop their mathematical skills using different approaches.

Teachers are constantly monitoring and assessing the children's understanding of mathematical concepts to inform future teaching and learning opportunities.



Step three

When suitable skills have been acquired, children are challenged and provided with opportunities to apply these skills into real life, authentic situations through our cross curricular planning. This ensures that children have numerous opportunities to not only acquire new mathematical skills but also to refine and apply them. This process forms the basis of our numeracy teaching at Ysgol Y Waun.

LITERACY, LANGUAGE AND COMMUNICATION

In Languages, Literacy and Communication, your child will learn about languages, gaining skills in English, Welsh and French as well as learning about literature in all its forms.

As citizens of a bilingual Wales in a multilingual world, we will equip our learners with the ability to use English, Welsh and French to connect with people, places and communities – fostering a pride in their sense of identity and belonging to Wales as well as the wider world.



Understanding languages and literacy is key to understanding the world around us. They enable us to make sense of what is heard, read and seen. We provide our learners with rich and varied opportunities to experience spoken and written language, as well as images, in a range of forms and genres.

The ability to express ourselves through spoken and written language is key to communication. We create many valuable opportunities for our learners to speak and write in a range of roles, genres, forms, media and styles, expressing themselves for different purposes and audiences.

At our school, literature fires the children's imaginations and inspires their creativity, helping to build a lifelong love of reading and writing. We provide our learners with literary experiences that engage them as listeners, viewers, readers, narrators and creators. These experiences help our children to appreciate a creator's craft as well as develop their own creative skills. In experiencing and responding to a variety of literature at our school, our learners are given an insight into the culture and history of Wales as well as the wider world.



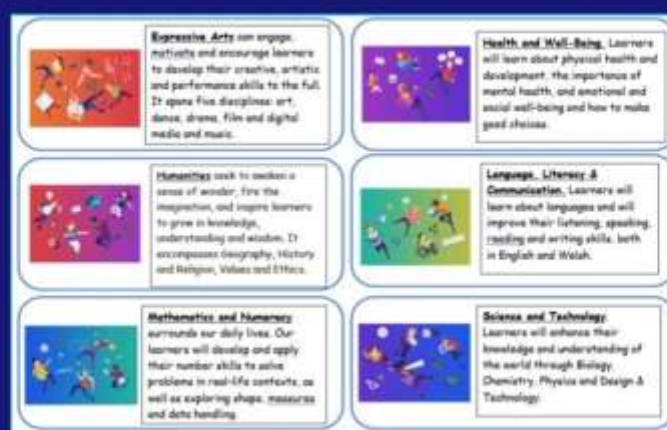
THERE ARE SIX AREAS OF LEARNING AND EXPERIENCE IN OUR CURRICULUM: -



Languages, Literacy and Communication
Mathematics and Numeracy
Science and Technology
Humanities,
Expressive Arts
Health and Well-being.



Everything your child learns will be connected to these areas.



In addition, our curriculum also covers digital skills, human rights, diversity and respecting differences, experiences and skills for careers and the workplace, learning about local, national and international contexts, and developmentally appropriate relationships and sexuality education.

We adopt a thematic, cross-curricular approach to teaching and learning and each year we choose three exciting whole school topics that we are all able to explore such as: 'My Wonderful World', 'A Step in Time', 'Journeys', 'Water, Water Everywhere' to name but a few! As a school, we are committed to perpetually refining our curriculum, planning and designing an inspiring, enriching curriculum for our 21st Century learners.

★ **ETHICAL, INFORMED CITIZENS OF WALES AND THE WORLD.**



- Find, evaluate and use evidence in forming views;
- Engage with contemporary issues based upon their knowledge and values;
- Understand and exercise their human and democratic responsibilities and rights;
- Understand and consider the impact of their actions when making choices and acting;
- Are knowledgeable about their culture, community, society and the world, now and in the past;
- Respect the needs and rights of others, as a member of a diverse society;
- Show their commitment to the sustainability of the planet;

AND ARE READY TO BE CITIZENS OF WALES AND THE WORLD.

★ **HEALTHY, CONFIDENT INDIVIDUALS READY TO LEAD FULFILLING LIVES AS VALUED MEMBERS OF SOCIETY.**



- Take measured decisions about lifestyle and manage risk;
- Face and overcome challenge;
- Have secure values and are establishing their spiritual and ethical beliefs;
- Are building their mental and emotional well-being by developing confidence, resilience and empathy;
- Apply knowledge about the impact of diet and exercise on physical and mental health in their daily lives;
- Know how to find the information and support to keep safe and well;
- Take part in physical activity;
- Have the confidence to participate in performance;
- Form positive relationships based upon trust and mutual respect;
- Have the skills and knowledge to manage everyday life as independently as they can;

AND ARE READY TO LEAD FULFILLING LIVES AS VALUED MEMBERS OF SOCIETY.

**★ AMBITIOUS, CAPABLE LEARNERS, READY TO LEARN
THROUGHOUT THEIR LIVES.**



- Set themselves high standards and seek and enjoy challenge;
- Are building up a body of knowledge and have the skills to connect and apply that knowledge in different contexts;
- Are questioning and enjoy solving problems;
- Can communicate effectively in different forms and settings, using both Welsh and English;
- Can explain the ideas and concepts they are learning about;
- Can use number effectively in different context;
- Understand how to interpret data and apply mathematical concepts;
- Use digital technologies creatively to communicate, find and analyse information;
- Undertake research and evaluate critically what they find.

AND ARE READY TO LEARN THROUGHOUT THEIR LIVES.

**★ ENTERPRISING, CREATIVE CONTRIBUTORS, READY TO
PLAY A FULL PART IN LIFE AND WORK.**



- connect and apply their knowledge and skills to create ideas and products;
- think creatively to reframe and solve problems;
- identify and grasp opportunities;
- take measured risks;
- lead and play different roles in teams effectively and responsibly;
- express ideas and emotions through different media;
- give of their energy and skills so that other people will benefit;

AND ARE READY TO PLAY A FULL PART IN LIFE AND WORK.

OUR CURRICULUM

OUR NEW CURRICULUM VISION

At Ysgol Y Waun and as a cluster of schools in the area, we are passionate about supporting our learners to achieve their full potential, whatever their aspirations and strengths, in a safe environment which respects everybody.

We hope that all learners here will develop the knowledge and skills they will need for the next stage of their lives and education. We will do everything we can to ensure that they leave us as happy, proud, confident and independent individuals who enjoy learning in an ever-changing world.

Everyone's voice and wellbeing is important at Ysgol Y Waun and it's a prominent part of the school's ethos. We develop the skills that all learners need to be able to look after themselves, to keep safe, to face and overcome challenges, and to enjoy learning.

The village of Chirk and the surrounding communities is a naturally Welsh area steeped in history, and we want to celebrate that throughout our work.

We also want to broaden the horizons of all learners to be able to appreciate the diversity and wonder of the world, and their place as individuals within it.

The school follows the Curriculum for Wales and organises the curriculum accordingly. Everything your child learns will be linked to the:

THE FOUR PURPOSES



Primary Menu Week 1				
Monday	Tuesday	Wednesday	Thursday	Friday
Pasta Bolognese & Crusty Bread Or Veggie Sausage With Mashed Potatoes & Gravy	Chicken Curry, Rice & Naan Or Country Veg Bake & Potato Wedges	Beef Burger Bag & Oven Baked Curly Fries Or Macaroni Cheese & Crusty Bread	Roast Chicken Or Quorn Fillet Sage & Onion Stuffing	Fish Fingers Or Quorn Dippers
Broccoli & Baked Beans	Sweetcorn & Beans	Beans & Peas	Mashed Potatoes	Chips
Ice Cream Roll & Fruit	Jam Sponge With Custard & Fruit	Crispy Cakes & Fruit	Farmhouse Mixed Veg & Gravy	Peas & Rainbow Salad
			Mini Doughnuts & Fruit	Cocoa Cakes & Fruit

Week 2				
Monday	Tuesday	Wednesday	Thursday	Friday
Chicken and Ham Pasta Bake with Crusty Bread Or Brunch Bag & Hash Browns	Pork Sausage With Mashed Potatoes & Gravy Or Quorn Curry, Rice & Naan	BBQ Pulled Chicken in a Bun & Skin on Fries Or Tomato & Basil Pasta with Crusty Bread	Roast Beef Or Quorn Fillet Yorkshire Pudding	Salmon Fillet Or Chicago Town Pizza
Baked Beans & Sweetcorn Flagjack & Fruit	Carrots & Peas	Beans & Veg Sticks	Mashed Potatoes	Chips
	Chocolate Sponge With Chocolate Sauce & Fruit	Shortbread Biscuits & Fruit	Farmhouse Mixed Veg & Gravy	Colerlaw & Peas
			Frozen Yoghurt & Fruit	Krispie Cake & Fruit

A filled jacket potato or a cheese, tuna or ham sandwich can be pre-ordered as an alternative main course choice

Yoghurt, fresh or tinned fruit will be offered as an alternative dessert. Menu may be subject to change



PACKED LUNCHES - BRECHDANAU

Please send your child's lunch (appropriately proportioned for their age/appetite) in a suitable container and not in a large holdall as we only have limited storage. Please do not use breakable containers or put hot drinks into the containers. Fizzy drinks are also not permitted



Confectionery is not allowed in school. This means sweets and bars of chocolate – anything that would be purchased in a sweetshop or sweets aisle in a supermarket. Biscuits and cakes of any flavour can be included in moderation. All left-over food, wrappers and packets have to be taken home for disposal rather than leaving them in the school bins. To help us improve our impact on the environment, please try to prepare lunches that require minimal wastage and/or can be reused.

SNACK

All children are allowed to bring a healthy snack in from home. This has to be fresh fruit or vegetables. Crisps, sweets, breakfast bars, 'Fruit Winders', yoghurts and chocolate bars are not permitted for snack time.



LUNCHTIMES

School meals are cooked on site.

Please notify us if your child has special dietary requirements.

FREE SCHOOL MEALS - CINIO

Universal Free School Meals are now available for all our pupils. But you may also be eligible for Free Meals due to the benefits you are on such as income support or job seekers allowance. It is useful to apply as this may also help with support for residential trips, school uniform etc. These forms can be downloaded from the school website or directly from Wrexham Council at: <https://www.wrexham.gov.uk/service/school-meals/free-school-meals>



Parents need to select the choice of meal for their child using the online parent pay system on www.wrexham.gov.uk/pay before 8am on the day required.

After eating their lunch the children go out to play. On wet days the children may go back to their classroom or play under the shelter. Midday Supervisory Assistants (who are all teaching assistants) look after the children throughout the lunchtime period.

The supervisors are encouraged to play games, read stories and generally to get involved with the children.

SCHOOL UNIFORM

Children are proud to wear the Ysgol Y Waun uniform and it has many benefits such as giving a sense of belonging and making it easier for staff to identify children when on school trips. As all children are expected to wear the uniform it can make a child feel uncomfortable if they are not dressed in the same way as other children at the school. Your co-operation is very much appreciated. The uniform is as follows:

Navy pinafore dress, skirt or grey trousers
Light blue polo shirt, blouse or shirt
Navy cardigan or sweatshirt with school logo
Blue and white dress or navy shorts in the summer
Footwear: Black shoes or (completely) Black trainers
Early Years pupils are advised to wear shoes with Velcro fastenings



Uniform bearing the school logo may be ordered directly via RAM leisure at: <https://www.ramleisure.com>

Book Bags

Navy book bags with the school logo may also be purchased directly from RAM

P.E. KIT

All children will need a PE uniform.

Chapel Lane Site

White T-shirt
Dark blue/black shorts
Pumps for outdoor games – not trainers

Lloyds Lane Site

White T-shirt
Dark blue/black shorts
Black trainers for outdoor games



JEWELLERY AND PERSONAL BELONGINGS

Children should not wear any jewellery in school because of the danger of accidents that may be caused to themselves or others in physical and practical areas of the curriculum. The only exception to the rule is for watches (when a child gets a little older) or a small stud in the ear. There can be no guarantee for the safe keeping of any valuable personal belongings in school.

LOST PROPERTY

If an item is named, we will do our best to return it. If not, it will be kept for a limited time only. A lost property display is held periodically, and any items not claimed will be donated to charity or disposed of. Losing uniform is frustrating but it is not the fault of the staff so please do not be frustrated with them if your child misplaces their clothing. Named clothes are normally returned swiftly.
PLEASE WRITE YOUR CHILD'S NAME ON EACH PIECE OF CLOTHING.

APPLYING FOR A SCHOOL PLACE



APPLYING FOR A RECEPTION PLACE FOR SEPTEMBER 2024



ADMISSION POLICY

The school adheres to the LA admission policy, details of which are to be found in the Parents', Guardians' and Carers' guide to Education services in Wrexham. This is available from the school, local library or Education department. The present allocation of places available each year is 50. Pupils with disabilities are welcomed at Ysgol Y Waun and are offered equal rights and opportunities. Parents are welcome to visit the school, please make an appointment with the Head teacher.

ADMISSION TO NURSERY

The Authority will admit a child to a maintained nursery school in the September following their 3rd birthday. Application forms are available at on the following link on Wrexham Council website <https://www.wrexham.gov.uk/service/school-admissions> to be completed by Parents or carers. Children attend the Nursery five sessions a week (2.5 hours in length). Before your child starts Nursery you will have several opportunities to visit the school and meet the staff.

- June/July - you will be invited to bring your child for a visit, this will give you the opportunity to meet your child's teacher and teaching assistants and view the classrooms. School uniform will be on display and details of how to order will be available.
- July – new children and parents visit the school on a short taster session to become familiar with the building and staff, which helps to prepare your child for Nursery.
- August – Children receive personal letter from their teacher confirming their start date.

Please note - Admission to Nursery does not automatically ensure a Reception place.

ADMISSION TO RECEPTION

The Authority will admit a child to a maintained primary/infant school in the September following their 4th birthday."

Application forms for Reception school admission are available from the Wrexham webpage <https://www.wrexham.gov.uk/service/school-admissions> and have to be filled in for a place in Reception.

TRANSFER TO CLASSES WITHIN THE SCHOOL

Throughout the year children get to know all teachers and members of staff. Towards the end of the Summer Term parents are told by letter which class their child will be in the following September. During transition week all children get the opportunity to meet their new teacher.

ATTENDANCE AND ABSENCE

At Ysgol y Waun we have a duty and responsibility to encourage pupils into the habit of attending regularly in order to achieve their full potential. If they are absent please inform the school (telephone the school between 8.30 am and 9 am or by letter with another parent). Authorised absence may be given for medical reasons e.g. illness, hospital or doctor's appointment. Any other reason for absence is not allowed and will be classed as 'unauthorised absence'. Attendance below 90% is unsatisfactory and will instigate a referral to the school's Education Social Worker and parents could be liable to prosecution.

School officially starts at 8.50a.m. each morning. It is important that your child arrives in school on time. When pupils arrive late it makes things difficult for everyone. The latecomer misses the first part of the day and often feels uncomfortable and embarrassed. Perhaps even more importantly, they miss the opportunity to play and socialise with their friends in the playground or to have their turn to take on duties and responsibilities.

All children who arrive late must be signed in at the office by an adult. Children collected early for a medical appointment must be signed out.



HOLIDAYS

School is only able to authorise 10 days for term-time holiday, at the discretion of the head teacher, where it is viewed that the family have no alternative. Any further holidays will be recorded as an unauthorised absence.



FIXED PENALTY NOTICE

The LA can issue a fixed penalty notice for unauthorised absences. A fixed penalty notice can be given for a pupil who has 10 unauthorised absences per term. Persistent lateness (more than 10 occasions per term) can also generate a fixed penalty notice and will incur a fine of £60.

THE SCHOOL DAY

CHAPEL LANE

Nursery

Morning session – 8.50-11.30

Reception, Year 1, Year 2

School Starts 8.50

Lunchtime 12-1pm

School Ends 3pm



Morning drop off

All parents use the main entrance through the rainbow gates at 8.50 when they open. Nursery and Reception children are escorted by parents to their classroom door. Year 1 and 2 walk on their own from the gate to encourage independence.

Home time, parents are asked to wait by the small gate until 3 o'clock and then to wait outside their child's class until their child's name is called by the teacher. Children are not allowed out of the classroom until parents or another responsible adult collects them. If you make other arrangements for your child, please inform their class teacher. If you are delayed please ring the school – 01691 770530.

LLOYDS LANE

Year 3, 4, 5 and 6

School Starts 8.50

Lunchtime 12-1pm

School Ends 3.15pm



Morning drop off

All children come through the main pedestrian gate when it is opened at 8.50. They then walk around the side of the building onto the playground where they are met by staff. There is always a member of staff on the front gate in the morning.

Home time

At home time, children will be dismissed from the school at 3:15p.m. Year 3 and 4 parents may collect their child from the main pedestrian entrance. Class teachers will walk their class to the pedestrian gate.

Year 5 and 6 children leave by the bottom doors nearest the leisure centre. If you are meeting your child from school please could you remain either by the Leisure Centre entrance or by the small pedestrian gate. Children on the Lloyd's Lane Site may walk home by themselves. If you are delayed please ring the school – 01691 770530.

Children attending Afterschool club will be escorted from Lloyd's Lane site to Chapel Lane site by a member of Rainbow's Staff.



OUR SCHOOL ORGANISATION

OUR CHAPEL LANE SITE:

PROGRESSION STEP 1

**THIS INCLUDES THE NURSERY
AND RECEPTION CLASSES**

PROGRESSION STEP 2

**THIS INCLUDES THE YEAR 1
AND 2**



LLOYDS LANE SITE:

PROGRESSION STEP 2

THIS INCLUDES THE YEAR 3

PROGRESSION STEP 3

THIS INCLUDES THE YEAR 4,5 AND 6



OUR SCHOOL GOVERNING BODY

The role of a Governor within a primary school is a serious yet extremely rewarding duty. They play an essential role in setting the strategic direction for the school and holding its leadership to account.

Chairperson
Mr Frank Hemmings



Governor Name	Position	Status
Mr F Hemmings	Chair	LA
Mr Alex Knopp	Vice Chair	Community
Mrs A Bell		Community
Mrs K Skeates-Lodge		Community
Ms A Winters		Parent
Mrs J Fawcett-Jones		Parent
Mrs Debbie Daniel		Parent
Mr M Evans		Parent
Miss A Roberts		Teacher
Miss K James		Staff
Mrs S Rodgers		Acting Head teacher

The Governing Body has responsibility for:

- delivery of the curriculum
- care and safety of the children and staff
- appointment of staff
- management of the budget
- maintenance of the building.



The full Governing Body meets at least three times a year, but a lot of work is undertaken in various committees: The full Governing Body meets twice a term. Each governor is also a member of one of the following committees:

- Finance
- Curriculum
- Health and Safety
- Staffing

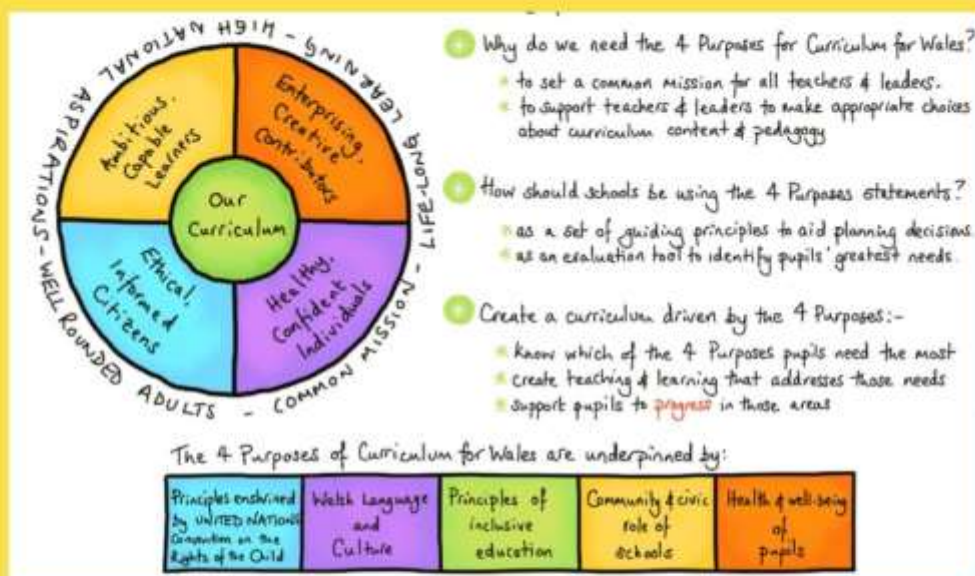
You can find out more information about our Governing Body and the work that they do by looking on our school website. <https://www.ysgolywaun.co.uk>

OUR SCHOOL



ACTING HEADTEACHER	MRS S RODGERS
CHAIR OF GOVERNORS	MR F HEMMINGS
ACTING DEPUTY HEADTEACHER	MRS N MORGAN
ALNCO (ADDITIONAL LEARNING NEEDS CO-ORDINATOR)	MRS N EDWARDS
CURRICULUM LEAD	MRS B CRAWSHAW
LLOYDS LANE LEAD	MISS A ROBERTS
SITE MANAGER	MR B SHIEL
ADDRESS	CHAPEL LANE CHIRK WREXHAM LL14 5NF LLOYDS LANE CHIRK WREXHAM LL14 5NH
TELEPHONE	01691 770530
SCHOOL EMAIL	MAILBOX@YWAUN-PR1WREXHAM.SCH.UK
SCHOOL WEBSITE	HTTPS://WWW.YSGOLYWAUN.CO.UK
AFTERSCHOOL CLUB	TRACEY JONES
RAINBOWS NURSERY PLUS	RACHEL HAYWARD

OUR NEW CURRICULUM VISION



At Ysgol Y Waun and as a cluster of schools in the area, we are passionate about supporting our learners to achieve their full potential, whatever their aspirations and strengths, in a safe environment which respects everybody.

We hope that all learners here will develop the knowledge and skills they will need for the next stage of their lives and education. We will do everything we can to ensure that they leave us as happy, proud, confident, and independent individuals who enjoy learning in an ever-changing world.

Everyone's voice and wellbeing is important at Ysgol Y Waun and it's a prominent part of the school's ethos. We develop the skills that all learners need to be able to look after themselves, to keep safe, to face and overcome challenges and to enjoy learning.

The village of Chirk and the surrounding communities is a naturally Welsh area steeped in history and we want to celebrate that throughout our work.

We also want to broaden the horizons of all learners to be able to appreciate the diversity and wonder of the world and their place as individuals within it.

For a full copy of our new 'Vision Values and Behaviours' document, please visit the New Curriculum for Wales Section of our website.

OUR SCHOOL VISION AND VALUES
AT YSGOL Y WAUN WE HAVE A
CLEAR VISION...
LEARNING TOGETHER, ACHIEVING
MORE!



Our aim is to:

- Create a warm, supportive and stimulating school environment in which children feel happy, safe and secure, and are eager to learn;
- Develop positive relationships founded on mutual trust, respect and good example;
- Ensure all pupils are encouraged and supported in reaching their potential as learners;
- Provide all children with a broad, balanced curriculum relevant to their needs and abilities;
- Develop children as caring sensitive and tolerant individuals who have a clear understanding of right and wrong;
- Introduce children to a wide range of experiences and challenges which motivate and enrich their learning, now and in the future;
- Have high expectation of all children in terms of learning and behaviour;
- Value all children equally, upholding their rights regardless of gender, ability, disability, colour race or religion;
- Promote a strong partnership with parents based on shared information and responsibility for children's learning;
- Serve the community well, encouraging and welcoming support and interest, and inspiring confidence in the work of the school.

'OUR MISSION AT YSGOL Y WAUN IS TO CREATE A HAPPY, SECURE, INSPIRATIONAL SCHOOL, WHERE PUPILS AND STAFF ARE VALUED AND SHARE ASPIRATIONS THROUGH LEARNING TOGETHER FOR A SUCCESSFUL FUTURE.'



Chirk is a small border town and part of the County Borough of Wrexham. Our Chapel Lane site provides education for children from 3-7 years of age. Our Lloyds Lane site provides education for children from 7 – 11 years of age. Welsh is taught as a second language to all children.

The school is conveniently situated in the centre of Chirk. The local environment and community facilities are frequently used to enhance the curriculum and provide children with first hand experiences. Some of these include:- visits to the library, fire station, hospital, old peoples home, Chirk Castle, field trips around Chirk and local places of worship.

The Chapel Lane building was purpose built in 1956 with an extension built in 1974. In 2006 the school celebrated its 50th anniversary. There are 6 classrooms, office, senior management room, staffroom and hall off a main corridor. All classrooms are equipped with interactive whiteboards, listening centres, music centres and role-play areas, which are used to enhance the delivery of the curriculum. Classroom computers, laptops and iPad's are all linked to the Internet.

All classrooms have doors opening on to the school grounds. The grounds are used as an additional teaching area and include a wooden adventure trail, wild garden and carved dragon, storytelling area and a gazebo. The Early Years playground is equipped with a large wooden playhouse, soft play area, painted track for wheeled vehicles, digging area, kitchen garden, log seating and a sensory path. This area is used extensively by the Early Years as part of their curriculum.

The Lloyd's Lane site was originally built as a Secondary school to serve the pupils of Chirk. It was then decided that the children would travel to Ysgol Dinas Bran for their Secondary education, and Ceiriog School was re-opened as a Junior School. It has been a Junior School for approximately 56 years.

The Lloyd's Lane site is a two-storey building with extensive school grounds. At ground level there are 3 classrooms, office, head teachers office, staffroom, dining room with Kitchen, and hall off a main corridor. At first floor level there are 4 classrooms, ppa room, library, art & craft room and interventions room. All classrooms are equipped with interactive displays and reflection corners. Classroom computers, laptops, Chromebooks and iPad's are all WIFI enabled for flexible use.

The junior playground is equipped with an activity trail, climbing wall, seating areas and school field with full sized football pitch, and Forest School area.

Freedom Leisure Centre and swimming pool are situated on the school site and the community have use of the school hall during the evenings and the weekends. The school has agreed access to the 3G pitch during school hours.

WELCOME FROM THE ACTING HEADTEACHER



It is with great pleasure that I introduce myself as the Acting Headteacher of Ysgol Y Waun. After twenty-four years in education across England and Wales I am committed to creating a happy and engaging learning environment that supports the academic, social and emotional growth of all pupils.

I am proud to have played a part in our latest Estyn inspection and as the Acting Headteacher, I am dedicated to building on the excellent work that has already been done, and to continue to provide a well-rounded education that prepares our pupils for success in all aspects of their lives.

At Ysgol Y Waun we are passionate about ensuring that each and every child develops with self-confidence, developing a growth mind set and achieving their full potential across the spectrum of experiences that are on offer. We believe that the whole child should be nurtured as well as aiming for everyone in our care to leave ready for their next educational chapter.

We are extremely fortunate in having a hugely committed staff who form a strong, caring and forward thinking team. The staff of the school ensure that they create an atmosphere of richness, interest and challenge. Both children and staff are encouraged to set and strive for high standards. It is essential to provide each of our children with the opportunity to develop emotionally, intellectually, physically and socially. This will help us continue to develop a caring ethos where staff and children can experience tolerance, justice and a sense of self-worth, ultimately leading to children who respect themselves, others and their environment.

I look forward to you and your child joining our Ysgol Y Waun, "family" and to meeting you on many future occasions throughout the learning journey.

Mrs Rodgers

HEAD TEACHER'S FOREWORD



Dear Parents,

I would like to take this opportunity to welcome you and your child to Ysgol y Waun. We are a happy, caring school whose aim is to provide a high quality education for all children.

Ysgol y Waun was established in September 2012 following the merger of Chirk Infants School and Ceiriog Junior School. Our school is situated on two sites; the Foundation Phase department is based at Chapel Lane and our Key Stage 2 department is based at Lloyds Lane. All staff are dedicated to raising standards in all areas of the curriculum. We are committed to providing every child with a curriculum that is suited to their individual needs.

We offer a range of school clubs and activities. Our sporting teams have been very successful in recent years.

We hope that you and your child will enjoy school life. Parents are encouraged to help with their child's education in partnership with the school. You are most welcome to visit the school to view our excellent facilities and resources. I would be pleased to answer any queries that you may have.

Yours sincerely,

Mr J. Roberts

**'YSGOL Y WAUN IS A CARING AND INCLUSIVE SCHOOL
WHERE EVERYONE TREATS EACH OTHER WITH
MUTUAL CARE, TRUST AND KINDNESS.
CLOSE WORKING RELATIONSHIPS BETWEEN STAFF
AND PARENTS AND CARERS ENSURE THAT PUPILS SETTLE QUICKLY
INTO SCHOOL AND THAT PARENTS
HAVE FAITH THAT THE SCHOOL LOOKS AFTER THEIR CHILDREN WELL.'**



**'DESPITE BEING ACROSS TWO SEPARATE SITES, THE SCHOOL
PROVIDES A COLLECTIVE FAMILY FEEL
WHERE ALL PUPILS AND FAMILIES ARE MADE TO
FEEL WELCOME.'**

ESTYN INSPECTION REPORT 10.2.23

CONTENTS PAGE

	Page
Estyn Inspection quotes February '23	1
Head Teacher's foreword	2
Welcome from the Acting Headteacher	3
History of Ysgol Y Waun	4
Our Mission Statement	5
Our New Curriculum Vision	6
Our School	7
Our School Governing Body	8
Our School Organisation	9
The School Day	10
Attendance and Absence	11
Applying for a School Place	12
School Uniform	13
Lunchtimes	14
The Curriculum	16
Forest Schools	25
Sex and Relationship Education	26
Charges for Educational Visits	27
Parents and Carers in Partnership	28
Site Access	29
Our Values and Behaviours	31
Special Educational Needs	32
Safeguarding	34
School Clubs/Breakfast club/ Rainbows Afterschool	35
Health and Safety	36
Medical	37
Community Involvement	38

YSGOL Y WAUN



SCHOOL PROSPECTUS
24/25